



THE ROTARY FOUNDATION FUNDS IN SUSTAINABLE ACTIONS


AHMAD HUSSEINI



A close-up photograph of a young child with dark skin drinking water from a brass tap. The child's face is in profile, looking towards the tap. The tap is a standard brass faucet with a green handle. The child's hand is visible, holding the base of the tap. The background is slightly blurred, showing a white sink and a red and white checkered cloth.

Not-for-profit corporation supported solely by voluntary contributions from Rotarians and friends of the Foundation who share its vision of a better world.

OUR FOUNDATION



The Rotary Foundation helps Rotarians to advance world understanding, goodwill, and peace by improving health, providing quality education, improving the environment, and alleviating poverty.

MISSION STATEMENT

Trustees adopt 4 priorities for 1 July 2018 till 30 June 2021

1. End polio - Countdown to History
2. Increase sustainability of our service efforts within the areas of focus through the use of District and Global Grants
3. Encourage the FULL USE of District Designated Funds
4. Encourage gifts and commitments that establish personal legacies within Rotary's Endowment

PRIORITIES AND GOALS

NEW ROTARY PEACE CENTER IN AFRICA

Makerere University in Kampala, Uganda

Partnership to begin in 2020-21

One-year professional certificate program

Certificate in Peacebuilding, Conflict Transformation and Development

Long-term plan to establish up to 3 new certificate programs by 2030

AREAS OF FOCUS

- 1- Peace-building and conflict prevention
- 2- Disease Prevention and Treatment
- 3- Water, Sanitation and Hygiene
- 4- Maternal and Child Health
- 5- Basic Education and Literacy
- 6- Community Economic Development
- 7- SUPPORTING THE ENVIRONMENT**

25 August 2020



African region declared free of wild poliovirus

ROTARY FOUNDATION GRANTS

GLOBAL GRANTS

DISTRICT GRANTS

DISASTER RESPONSE GRANT

PROGRAMS OF SCALE GRANTS

GLOBAL GRANTS

Support large international activities with sustainable and measurable outcomes in one or more of Rotary's areas of focus

Funded by Host/International Club or District , 3rd party, DDF, and WF

Minimum budget US\$30,000

Maximum World Fund award \$400,000

NO minimum World Fund match

100% WF match for DDF contributions

NO World Fund match cash contributions

International sponsors at least 15% of total contributions

SERVICE AND GIVING 2017-2020

Country	Grants	Value \$	Water	GOLI	COVID19	Other	TOTAL GIVING DISTRICT 2452
Armenia	4	233,630				233,630	\$ 1,540,075
Cyprus	4	493,438			151,056	342,382	
Georgia	1	37,700			37,700		
Jordan	8	1,240,924		668,872		572,052	
Lebanon	37	3,673,283	969,763	897,025	376,679	1,429,816	
Palestine	4	428,439			141,575	286,864	
District	58	6,107,414	969,763	1,565,897	707,010	2,864,744	

DISTRICT GRANTS

Block Grants awarded annually to Districts

Fund smaller-scale, short term projects that address immediate needs in your community or abroad

Districts may apply up to 50 % of their District Designated Funds to a District Grant each year.

DISASTER RESPONSE GRANT

Disaster Response Grants provide a fast and effective way to respond to local disasters.

Available to receive contributions of both DDF & cash

Districts in the affected area may apply for a maximum grant of \$25,000

Based on the availability of funds



PROGRAMS OF SCALE GRANTS

Address a clearly defined need that reflects community priorities and engages its leaders

Each grant will support, for three to five years, activities that align with one or more of Rotary's areas of focus.

Each year, one approved project will receive \$2 million from The Rotary Foundation's World Fund.

\$137M IN GRANT AWARDS 2019-20



490 DISTRICT GRANTS / \$25M

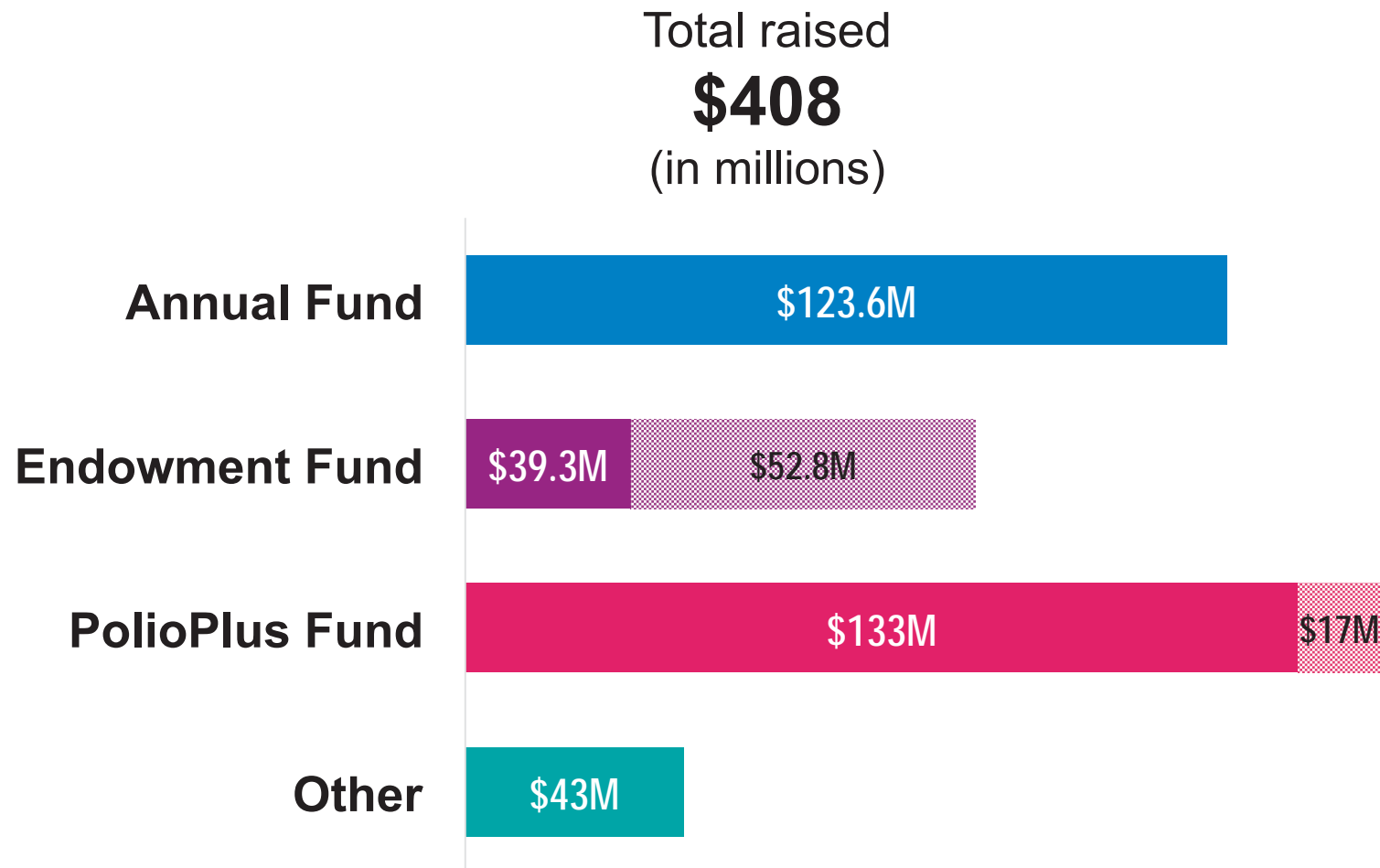


1,350 GLOBAL GRANTS / \$105M



284 DISASTER RESPONSE GRANTS / \$7M

2019-20 WORLDWIDE FUNDRAISING



Figures are subject to audit



WHO DONATES TO TRF



**452,393 INDIVIDUAL DONORS
MADE CONTRIBUTIONS IN 2018**

**ALMOST 432,715 OF THESE
WERE ROTARIANS**

**ABOUT 36% OF ALL ROTARIANS
MADE AN INDIVIDUAL GIFT**

WHY DONATE TO TRF

- # 6 MANY WAYS TO CHANGE LIVES
- # 5 TRANSPARENCY AND EFFICIENCY
- # 4 INVOLVEMENT OF ROTARIANS
- # 3 SUSTAINABLE RESULTS
- # 2 PERSONALIZED PHILANTHROPY
- # 1 LEGACY FOR THE FUTURE



4
the charity 'Charity Navigator' highest level



92%
of funds are spent on program awards and operations



The Rotary Foundation



WHERE TO DONATE

A young girl with dark hair, wearing a green jacket, is holding a lit candle in a small metal cup. She is looking towards the camera with a serious expression. The background is dark and out of focus, with another person's face partially visible behind her.

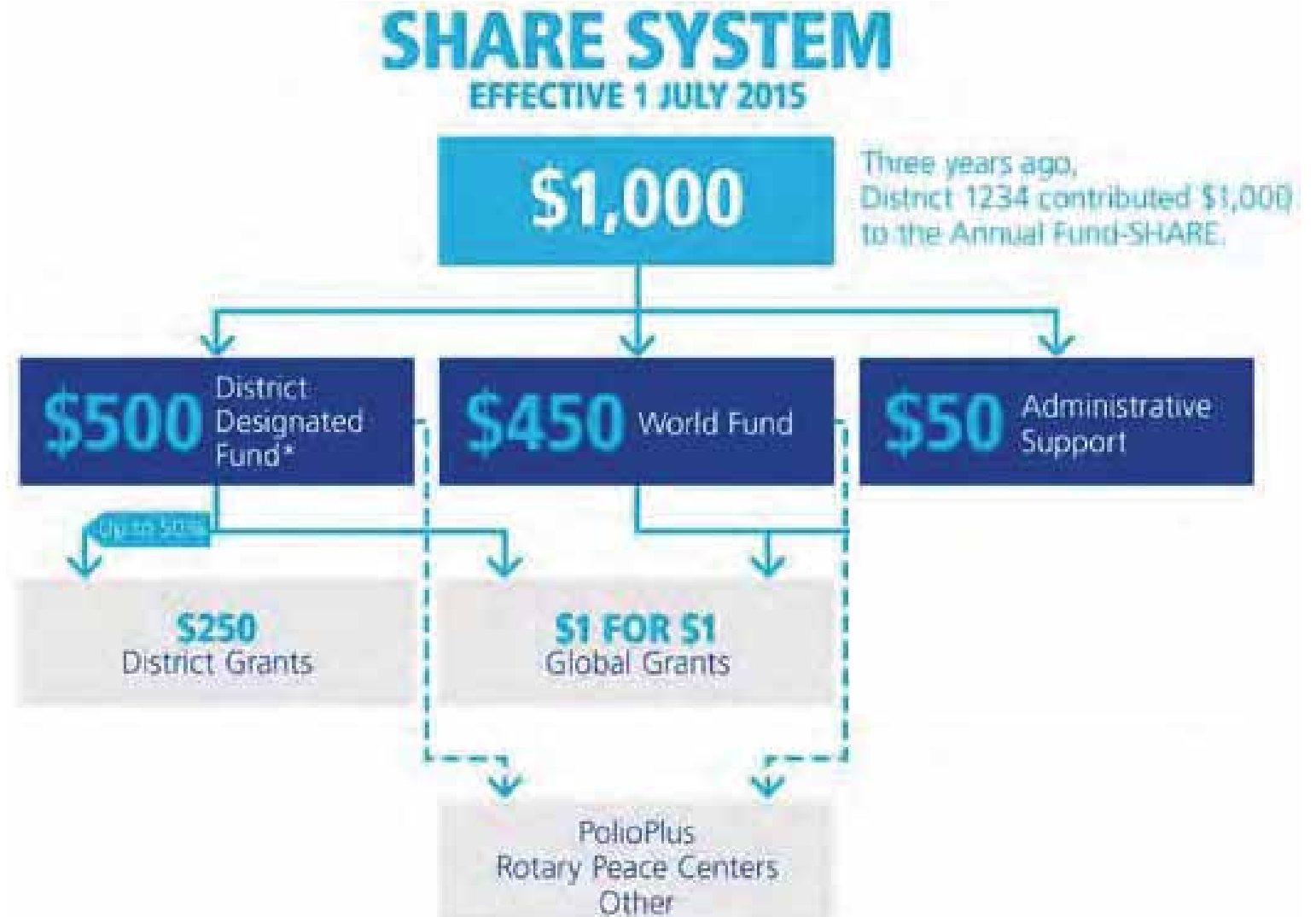
ANNUAL FUND

POLIOPLUS FUND

ENDOWMENT FUNDS

APPROVED GLOBAL GRANTS

THE ANNUAL FUND - SHARE



THE ANNUAL FUND – WORLD FUND

World Fund contributions provide the Foundation's portion of funding for approved Grants and other programs support.

The Trustees manage these funds and make them available to all Districts for the matching portion of Global Grants.



THE ANNUAL FUND – AREAS OF FOCUS


Areas of Focus contributions provide the Foundation's portion of funding for activities that address critical humanitarian issues and needs.

They are counted towards a club's annual giving goal and per capita calculations.

They are eligible for all Annual Fund recognition opportunities

Not included in a District's SHARE calculation and do not generate DDF.

POLIO PLUS FUND

A group of children, likely in a developing country, are shown walking with the aid of blue canes. They are wearing white t-shirts with a logo and yellow caps. The child in the foreground is looking towards the camera.

Money that is contributed to the PolioPlus fund is used solely for the purpose of achieving the worldwide Eradication of Polio.

Rotarians are asked to continue contributing to the PolioPlus Fund until worldwide polio eradication is certified.

**END
POLIO
NOW**

THE ENDOWMENT FUND

Contributions are invested to preserve & increase the principal and to give the Foundation the ability to meet future humanitarian and educational needs.

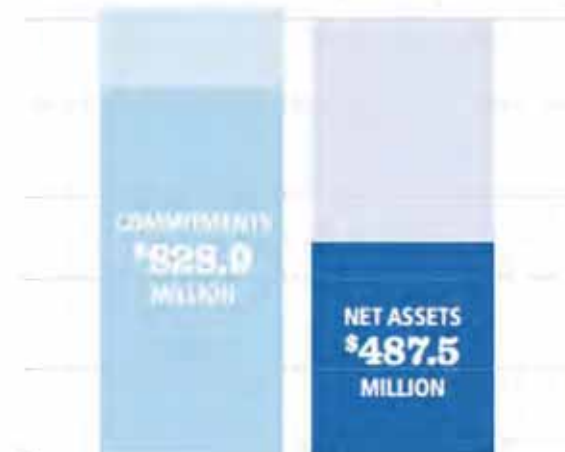
A percentage is spent yearly to support Foundation grants and programs.

Our contributions to the Endowment Fund secure the Foundation's future.

BUILDING THE ROTARY FOUNDATION ENDOWMENT: 2025 BY 2025

Rotarians are working toward the goal of reaching \$1.0 billion in net assets* and \$1.025 billion in commitments[†] for future gifts, totaling \$2.025 billion for the Endowment by 2025. As of 30 June 2019, net assets came to \$487.5 million and commitments totaled \$828.9 million, for a combined total of more than \$1.3 billion.

GOAL \$1.025 BILLION + \$1 BILLION = \$2.025 BILLION



Combined total = \$1.316 billion

HOW TO DONATE TO TRF

**LOOK FOR CRAZY
CREATIVE
FUNDRAISING IDEAS**

**LETS PUT FUN IN
FUNDRAISING**





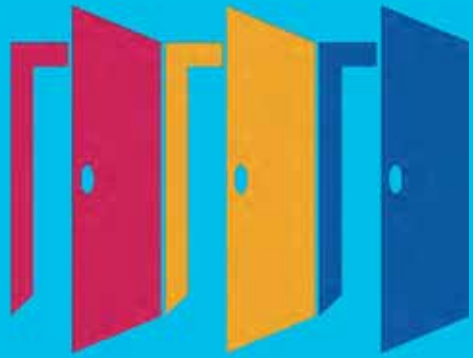
RAISE FOR ROTARY

A NEW PEER-TO-PEER
FUNDRAISING PLATFORM THAT
SHARES ROTARY'S CAUSES WITH
YOUR FRIENDS AND FAMILY

<https://raise.rotary.org/>



NOTHING CAN STOP
ROTARIANS AT WORK!



Rotary Opens Opportunities

Ahmad Husseini PHF, Benefactor, MD

ARRFC Zone 21B 18-21

TRF Cadre of Technical Advisers 20-23

Grant Project Adviser Cadre Team 20-23

D.2452 Grants Chair, AF Chair 19-20

DDG Lebanon 17-18

Rotary Foundation Country Chair 15-17 & 18-19

Assistant Governor 14-15

District Conference Secretary 13-14

PP RC of Tripoli-Maarad # 50064

21 December 2020

